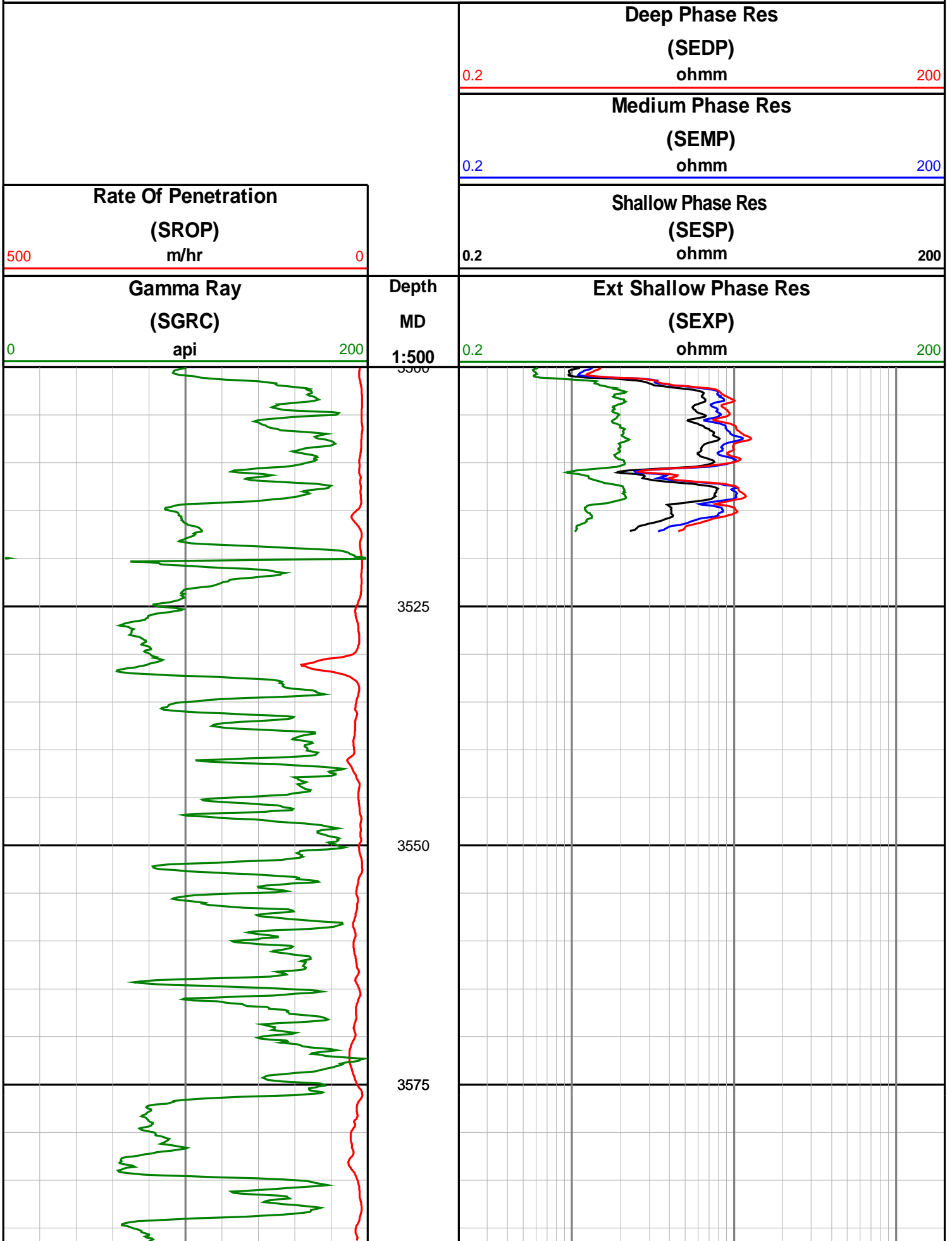
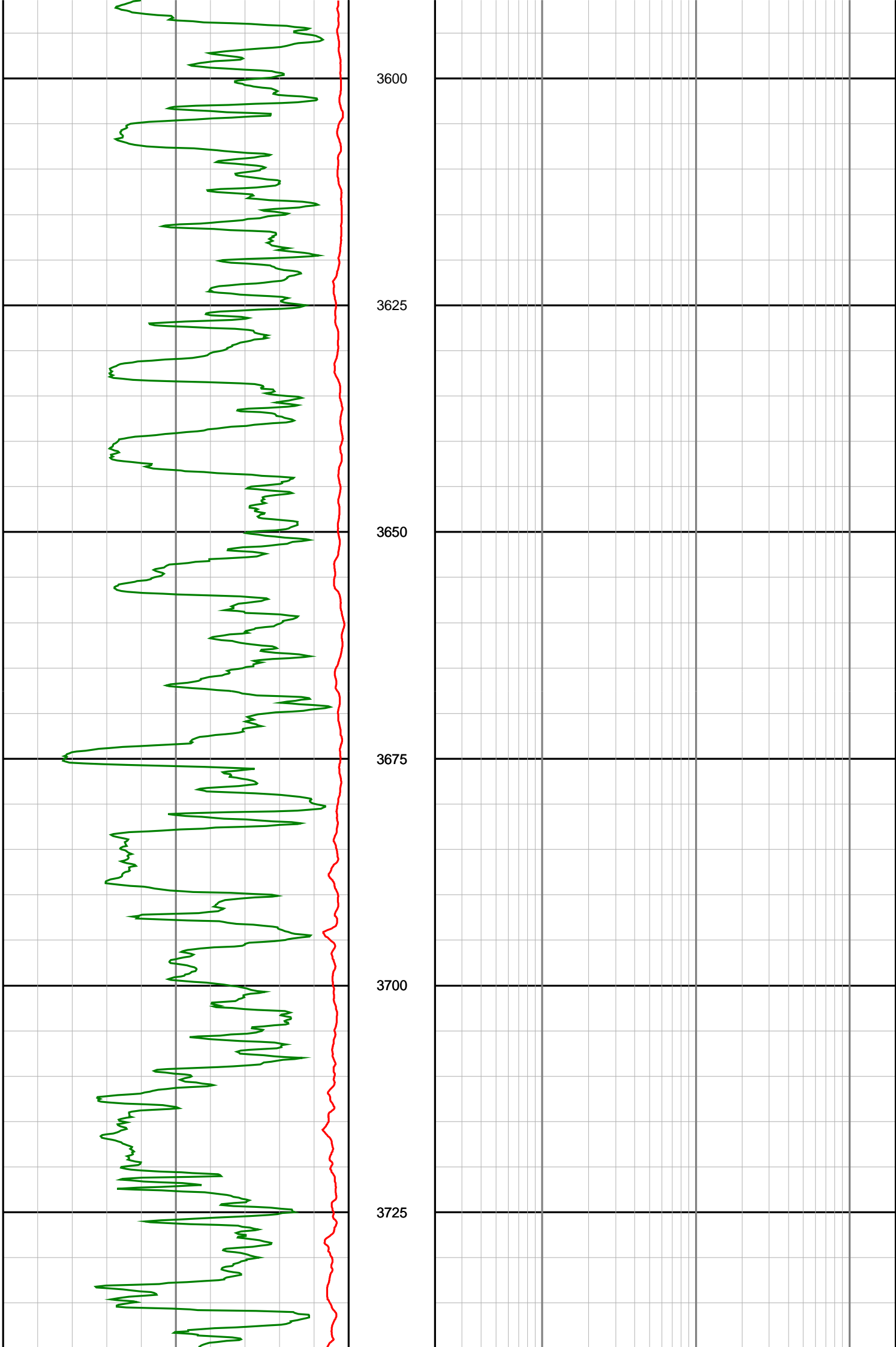


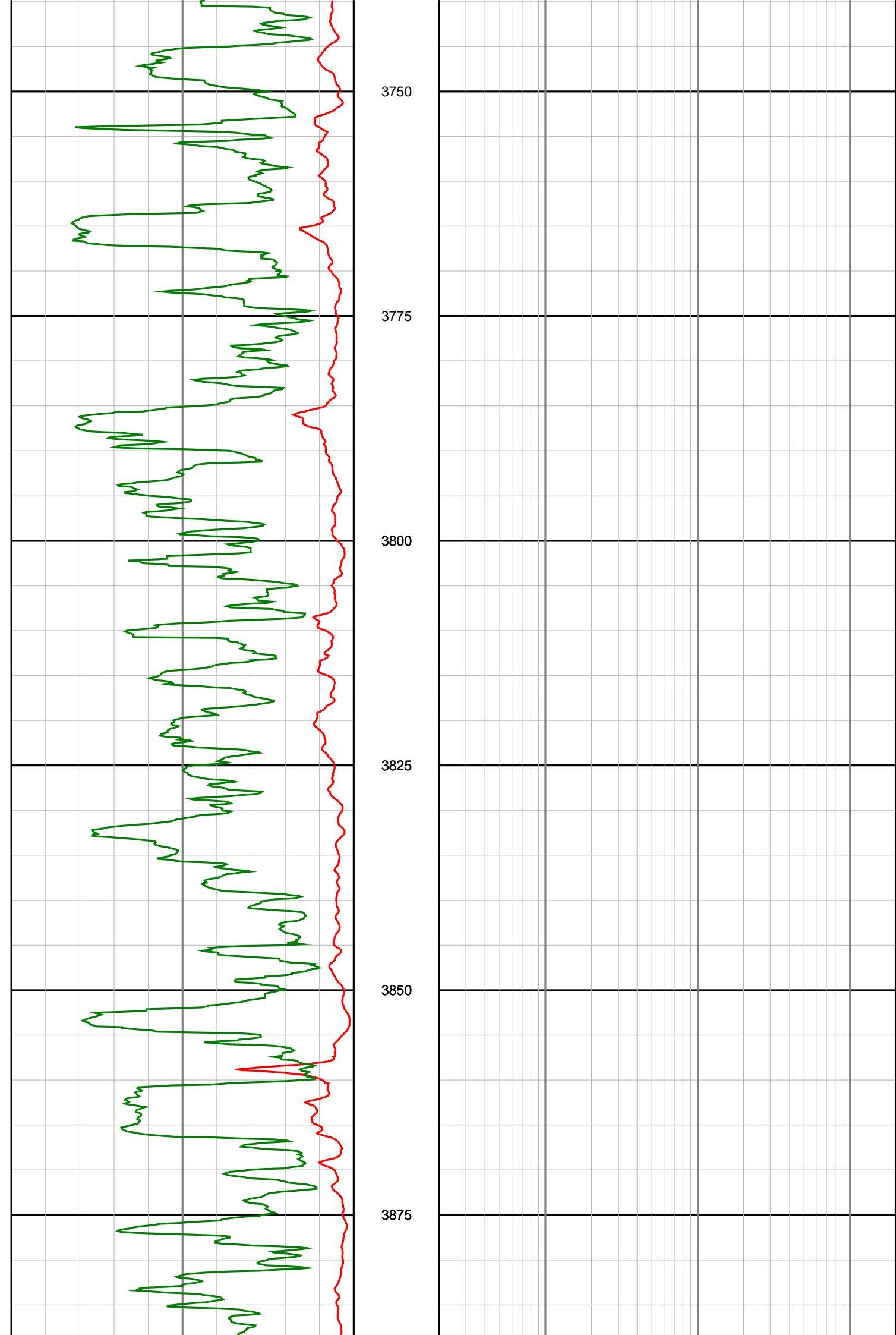
Anzon Australia Ltd

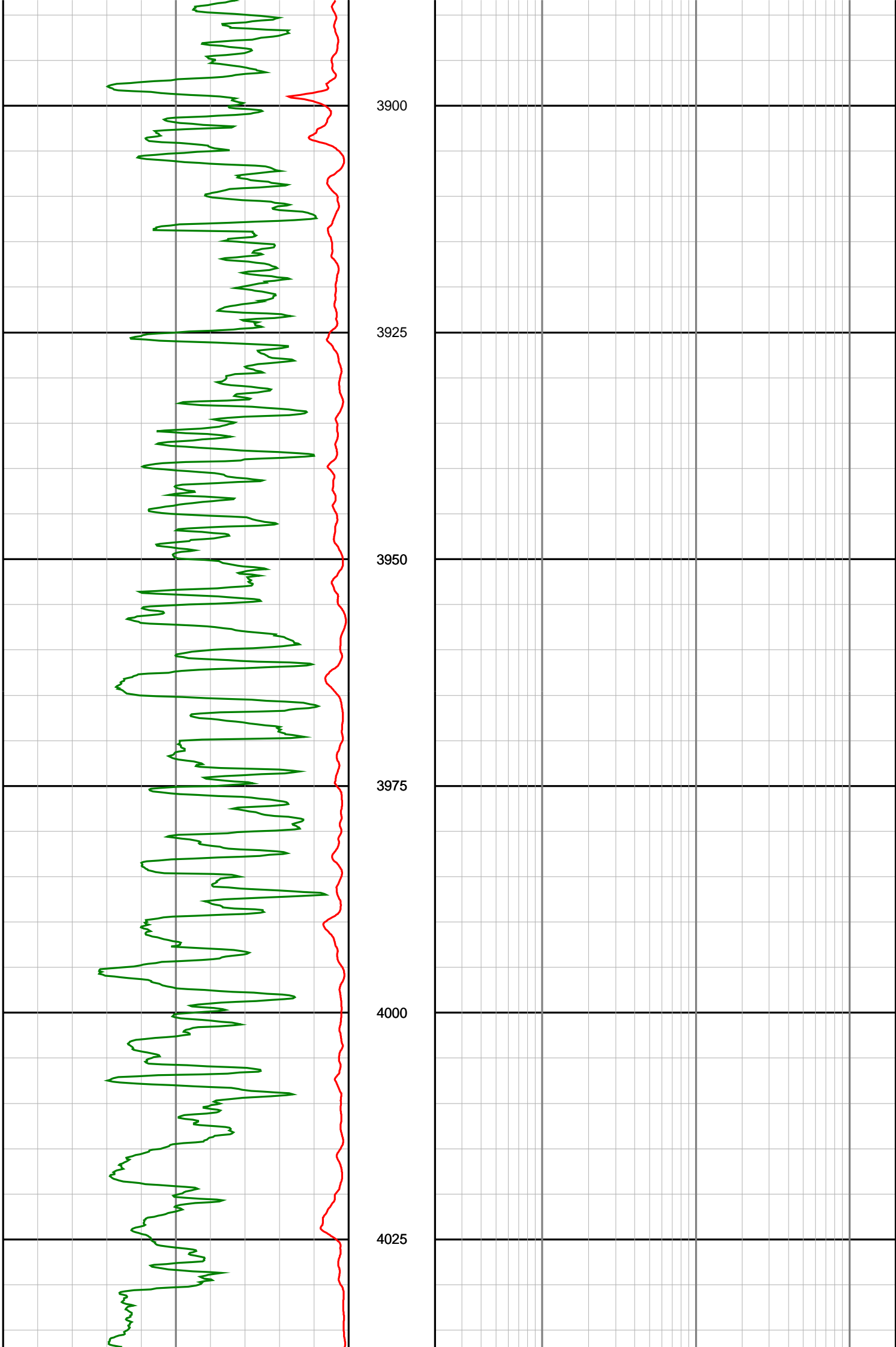
Basker-3

Realtime LWD Log (Permanent Datum - LAT)









	<p style="text-align: center;">4050</p>	
<p style="text-align: center;">Gamma Ray (SGRC) api</p> <p>0 200</p>	<p style="text-align: center;">Depth MD 1:500</p>	<p style="text-align: center;">Ext Shallow Phase Res (SEXP) ohmm</p> <p>0.2 200</p>
<p style="text-align: center;">Rate Of Penetration (SROP) m/hr</p> <p>500 0</p>		<p style="text-align: center;">Shallow Phase Res (SESP) ohmm</p> <p>0.2 200</p>
		<p style="text-align: center;">Medium Phase Res (SEMP) ohmm</p> <p>0.2 200</p>
		<p style="text-align: center;">Deep Phase Res (SEDP) ohmm</p> <p>0.2 200</p>